



Innovative Philanthropy to Support Immigrants and Refugees

Jan 25, 2023



World Education Services (WES) is a non-profit social enterprise dedicated to helping international students, immigrants, and refugees achieve their educational and career goals in the United States and Canada. For more than 45 years, WES has set the standard of excellence in the field of international academic credential evaluation. Through WES Global Talent Bridge, the organization advocates the workforce integration of immigrants and refugees who have international experience and training. Its philanthropic arm, the WES Mariam Assefa Fund, supports inclusive economies that help immigrants and refugees thrive in the United States and Canada.



Our Mission

We help people **learn, work, and thrive** in new places. We help society **recognize the value** of people's education and experience.



Our Vision

Everyone is able to put their education, experience, and skills to work **anywhere** in the world.

The Fund advances economic and social inclusion so that immigrants and refugees can achieve their aspirations and thrive. We do this by focusing on four impact areas: Opportunity, Wealth, Power, & Justice.



Opportunity

Education, Skills, & Training

Employment

Wrap-around Supports



Wealth

Financial Inclusion

Wealth and Asset-building



Power

Leadership

Ownership

Worker Organizing



Justice

Policy and Advocacy for Just Systems

Inclusive Communities

Trusted, Community-driven Media

The Fund's current Canada portfolio reflects a mix of 44 local and national efforts – placed-based projects, local innovations with potential for national scaling, and national pilots



Our Approach to Philanthropy



Catalytic Risk Capital

Award grants and impact investments to test and demonstrate the impact of innovative, earlier stage, and/or less proven concept



Partnerships

Leverage additional resources and expertise to grow the field and extend our impact

3



Knowledge Sharing

Adopt an intentional learning orientation and commit to transparently sharing insights and data with the field



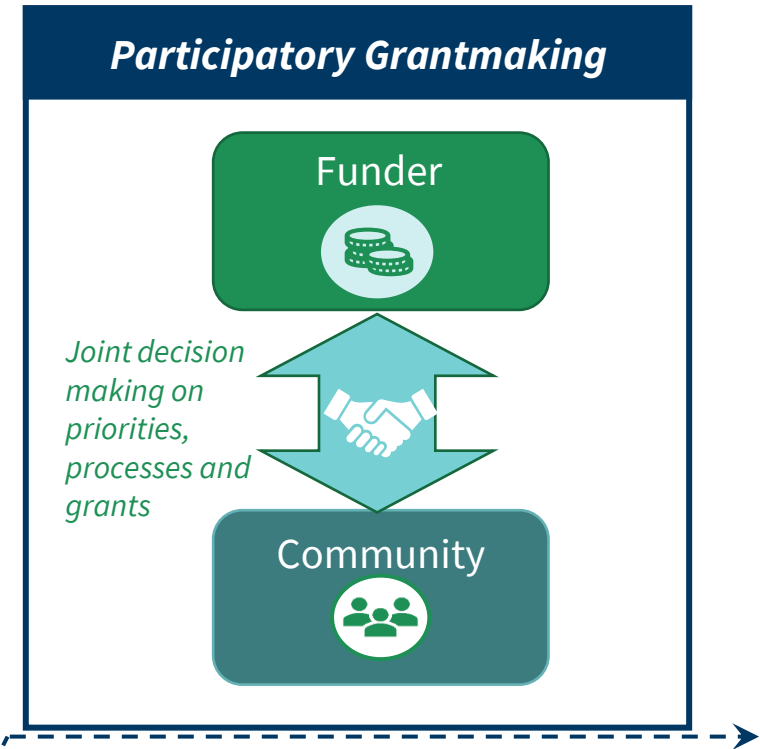
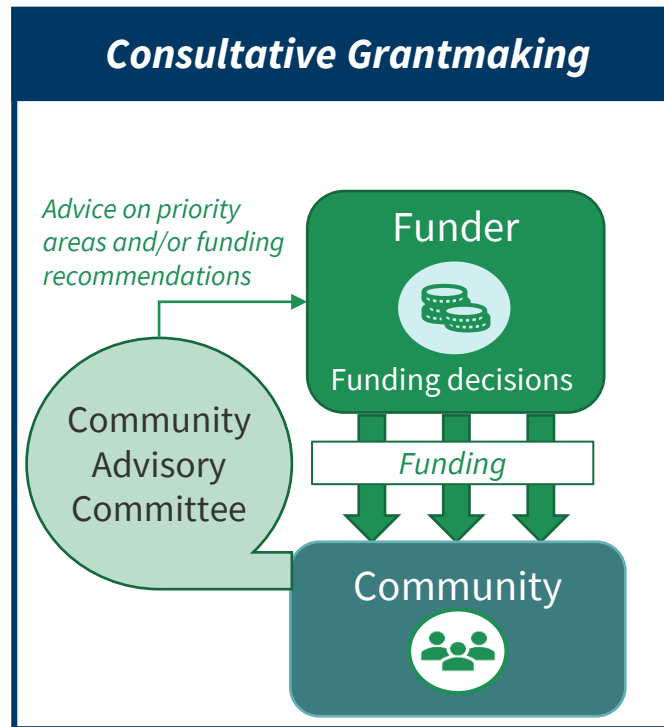
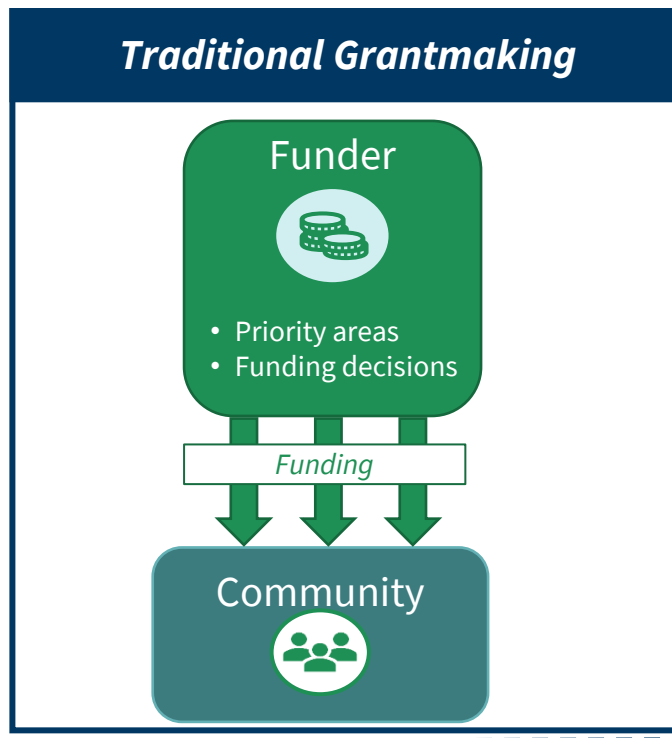
Influence and Communications

Elevate the voices of immigrants and refugees, mobilize key stakeholders, and advocate for change

Integrating Justice, Equity, Diversity & Inclusion into Philanthropic Practice



The move from traditional to participatory grantmaking has potential to shift decision-making power to the communities most impacted by funding decisions.



In Canada, many funders have moved from traditional to consultative philanthropy; however, there are very few examples of true participatory grantmaking approaches

Case Study: Participatory Grantmaking Pilot in Peel Region, ON

